

Two Story Series



Custom Homes Made Simple

Cullen Brothers fulfills your dreams.

Cullen Brothers makes building a custom home simple and beautiful! With our numerous two story floor plans, we can custom design around your individual taste and budget. You can choose from 3000 square feet of living space up to 6000 square feet. Your home can be a sanctuary, a retreat; Somewhere you want to spend your time. Cullen Brothers can fulfill your dreams and provide you with a finished project built to the highest standards within the industry.!

**Cullen
Brothers**

Custom Homes

www.cullenbrothers.com

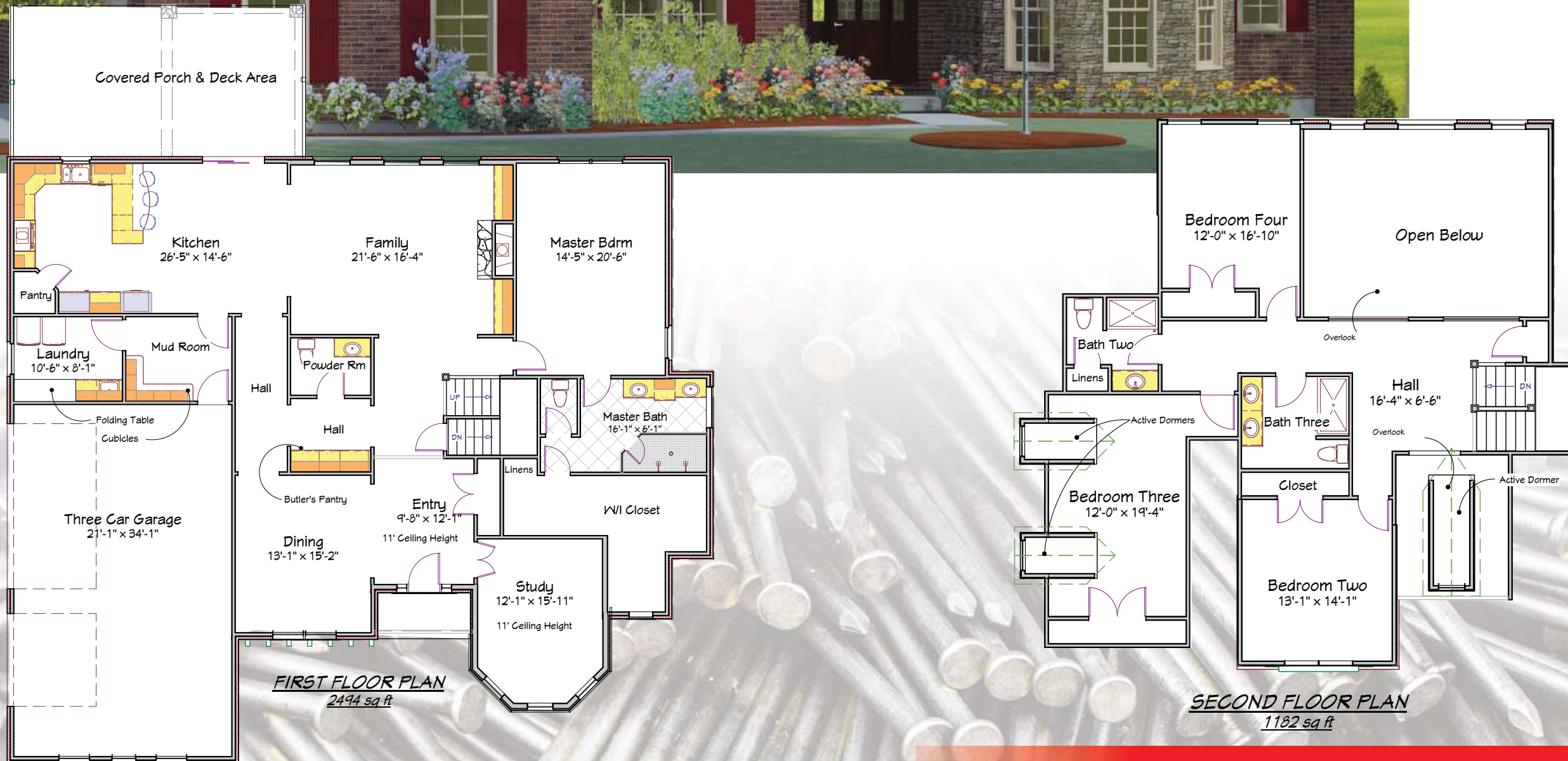
Since 1997

Ballard.....	2, 3
Bennington.....	4, 5
Birkshire	6, 7
Brianna	8, 9
Buckingham	10, 11
Carolina.....	12, 13
Crethaven.....	14, 15
Farmingdale	16, 17
Hutchins.....	18, 19
La-Alma Elyse.....	20, 21

Ballard

The Ballard

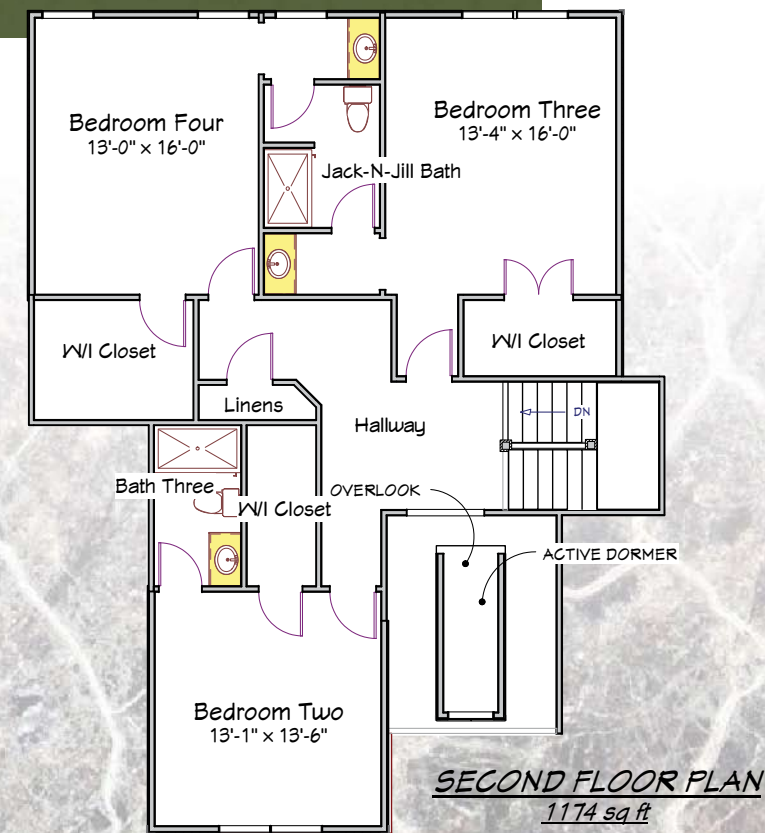
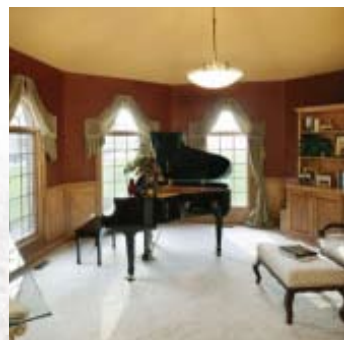
The Ballard is a 3700 square foot first floor master with four bedrooms and three and one half baths. The plan features open to below space overlooking the foyer and family room. Active dormers compliment this plan providing a unique interior perspective lost in today's residential design trends. Add basement finishing to this plan and the living space would top out at over 5000 square feet with five bedrooms and four and one half baths.



Bennington

The Bennington

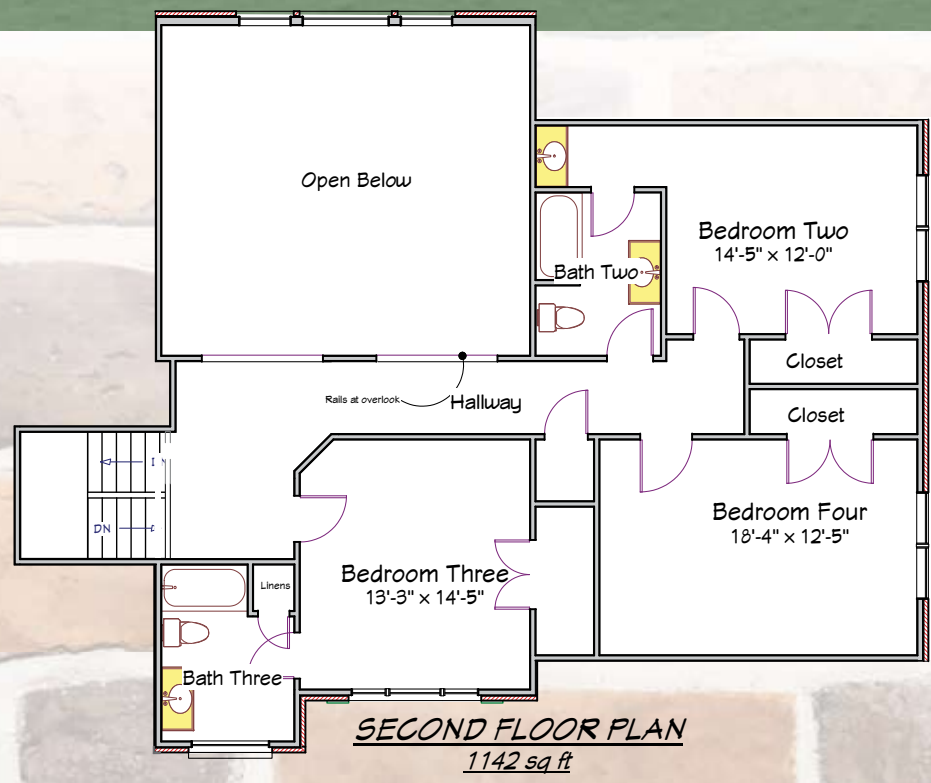
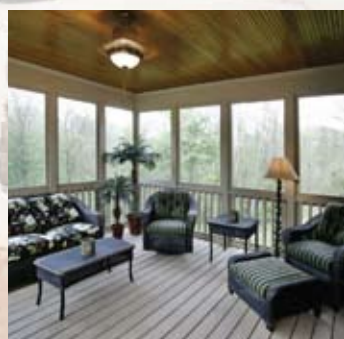
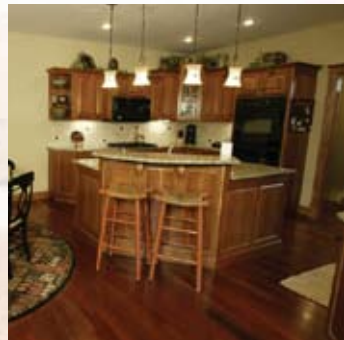
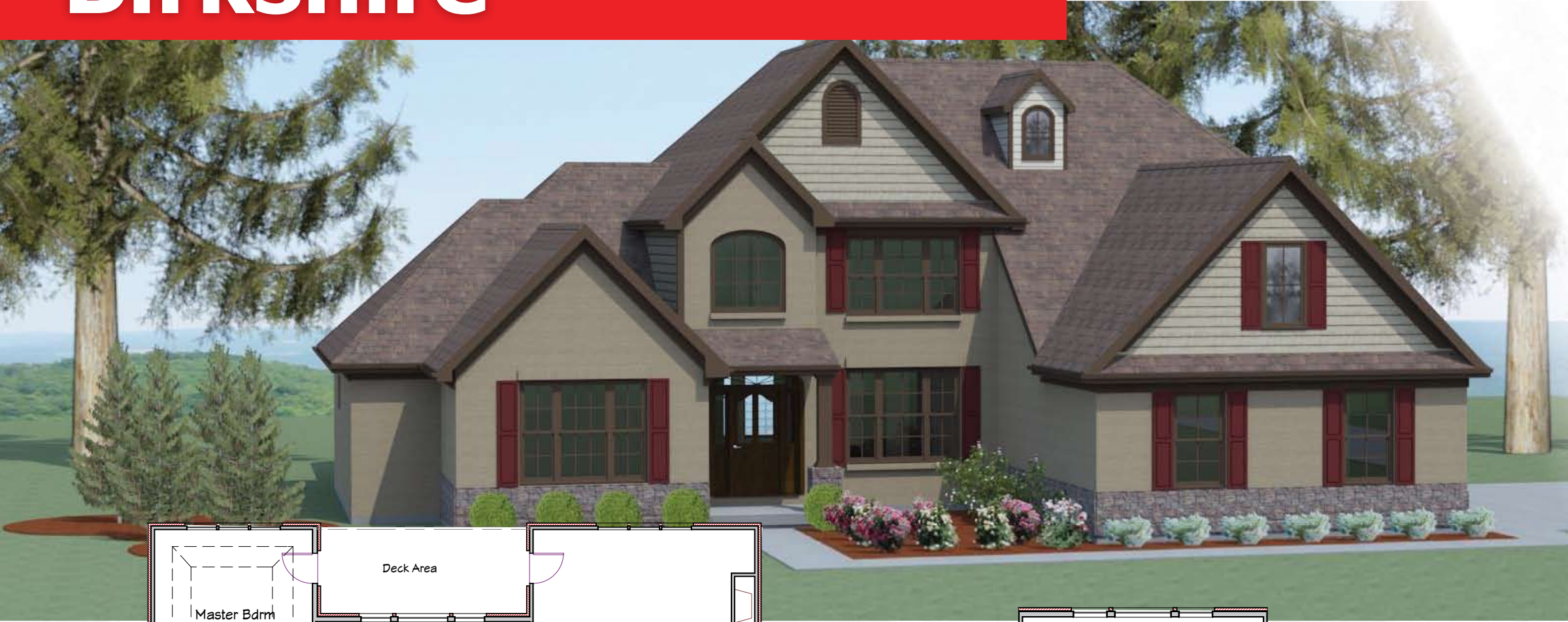
The Bennington is a slightly smaller version of our Ballard plan. It boasts approximately 3700 square feet, yet the open to below space above the family room was eliminated to make this plan more economical. The Bennington has four bedrooms, a first floor master, 11' ceilings in the study and foyer, and spacious kitchen. Add basement finishing to this plan and the living space would top out at over 5000 square feet.



Birkshire

The Birkshire

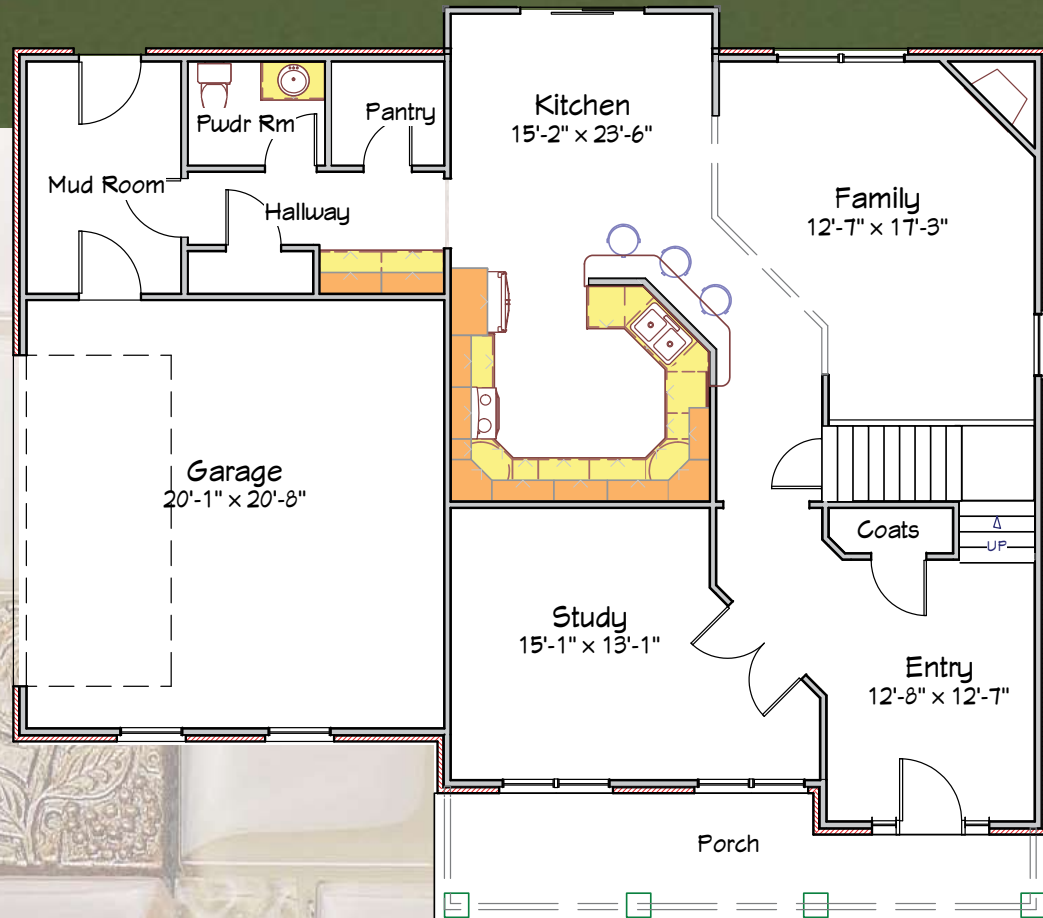
They just don't come a spacious as the Birkshire! This four bedroom, first floor master plan, has some of the most spacious bedrooms you will find in any plan. The plan also includes a first floor study, his/her closets, spacious kitchen, a large hearth room for relaxation, three car side entry garage and much more. A fifth bedroom could be added over the garage or basement finishing could be provided to expand the living space to nearly 6000 square feet.



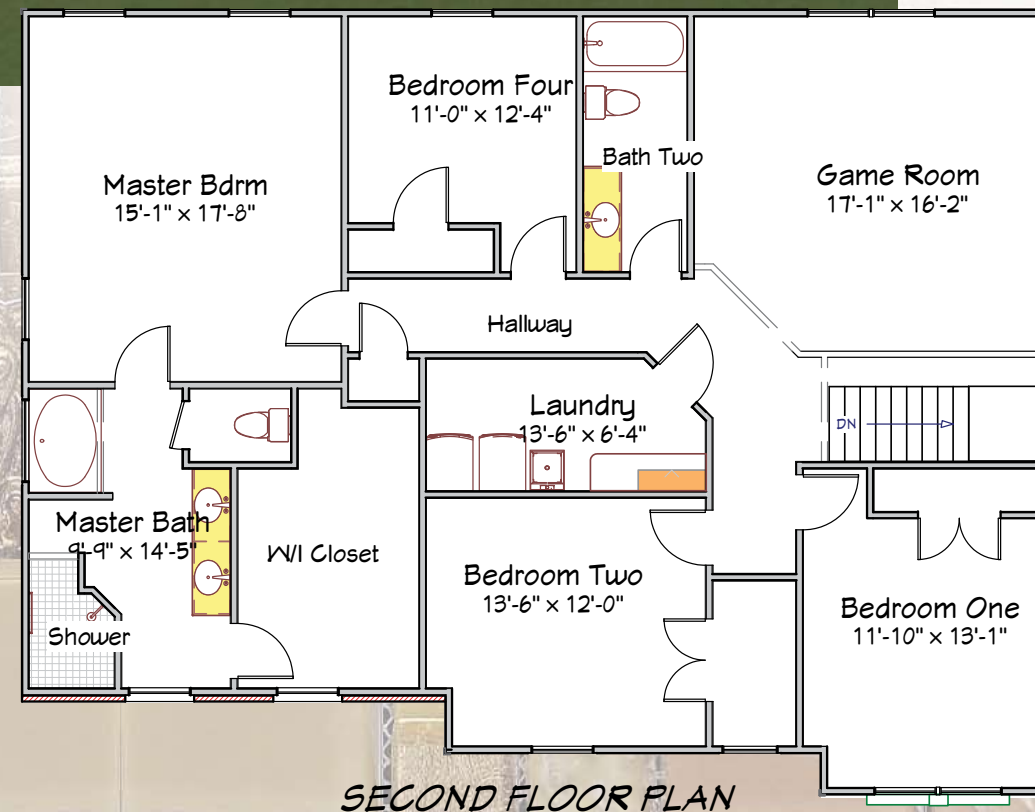
Brianna

The Brianna

The Brianna provides value at a premium! This four bedroom, second floor master plan includes nearly 3000 square feet of living space. The plan is complimented with a full porch, first floor study, mud room, and bonus room on the second floor.



FIRST FLOOR PLAN
1256 sq ft



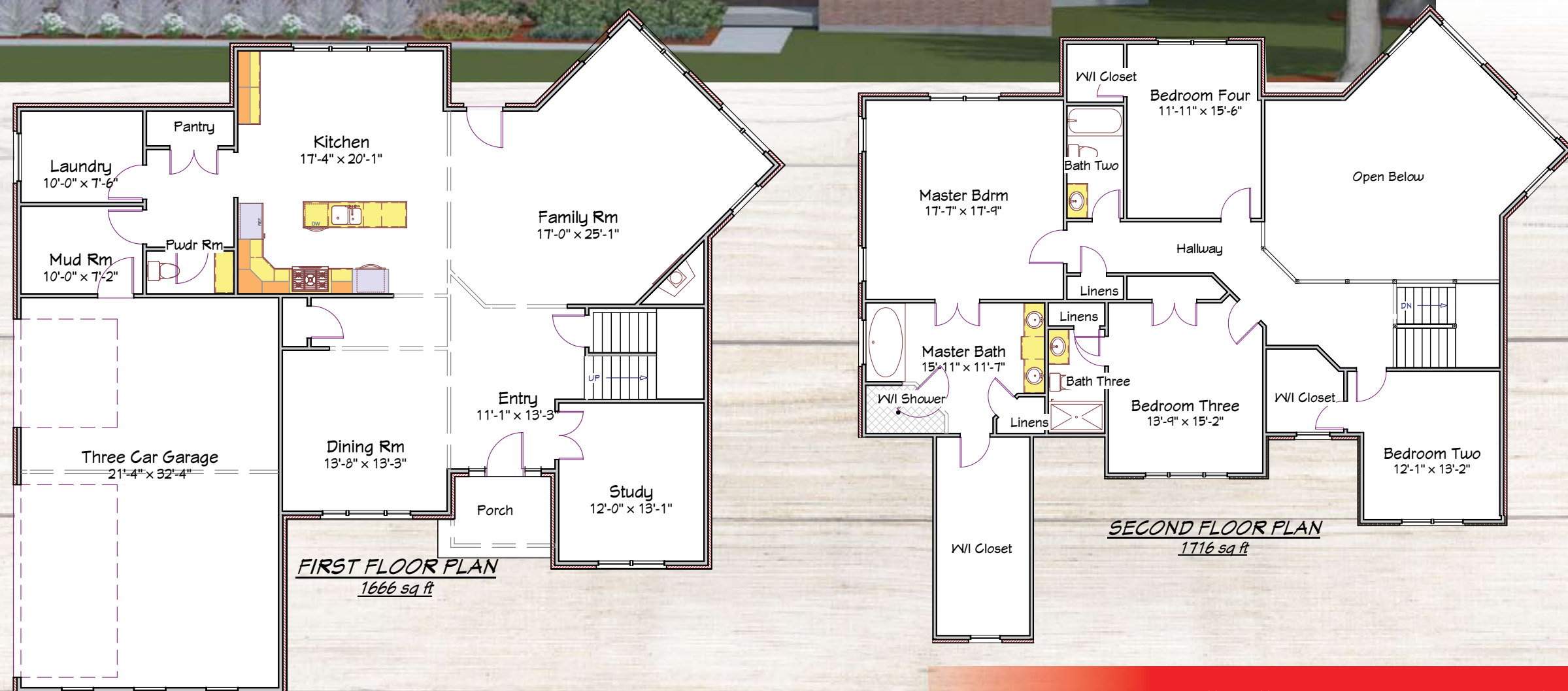
SECOND FLOOR PLAN
1700 sq ft



Buckingham

The Buckingham

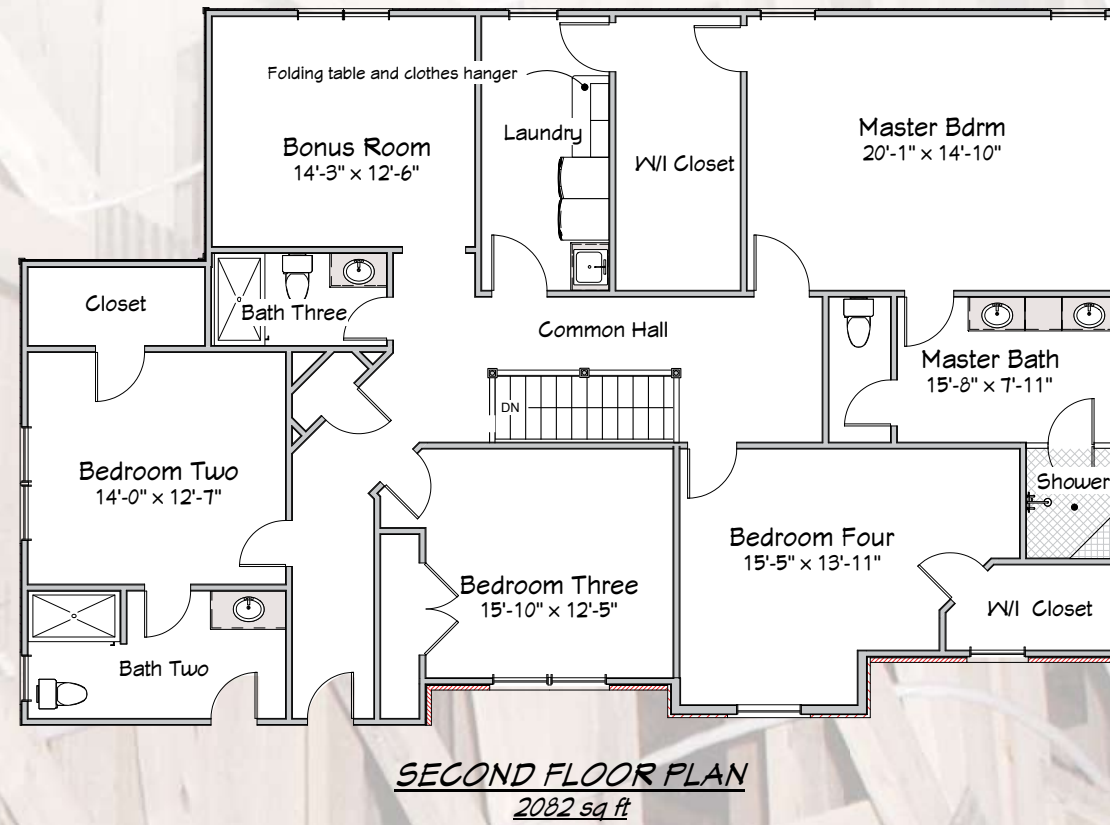
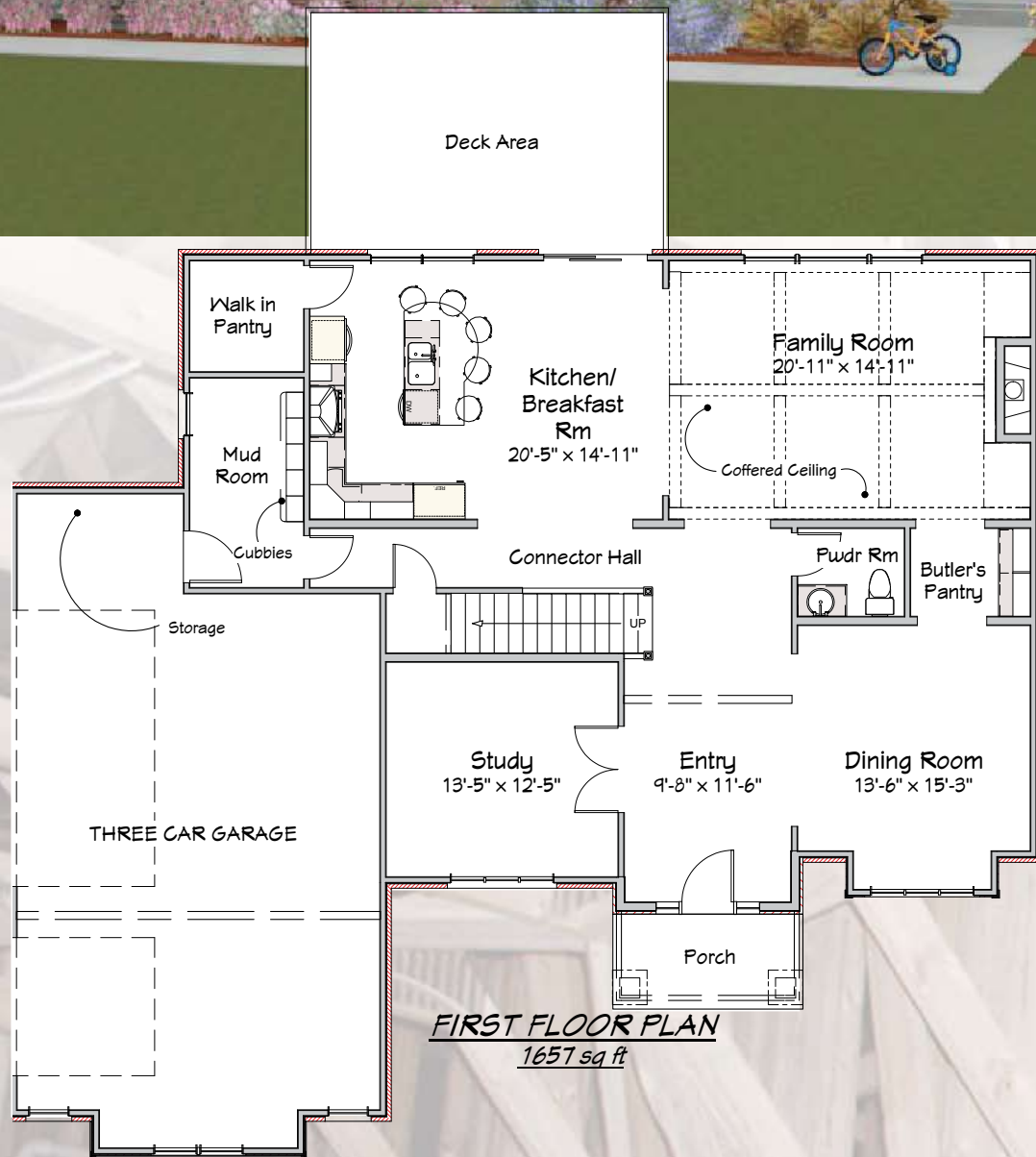
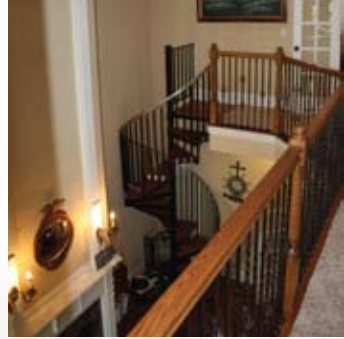
The Buckingham is a transitional four bedroom, two story plan with a second floor master suite. The plan includes three and one half baths, spacious bedrooms, large walk in closets, and uniquely configured family room with open to below space above. The unique exterior elevation makes this plan very appealing for today's active families seeking a fresh and unique design.



Carolina

The Carolina

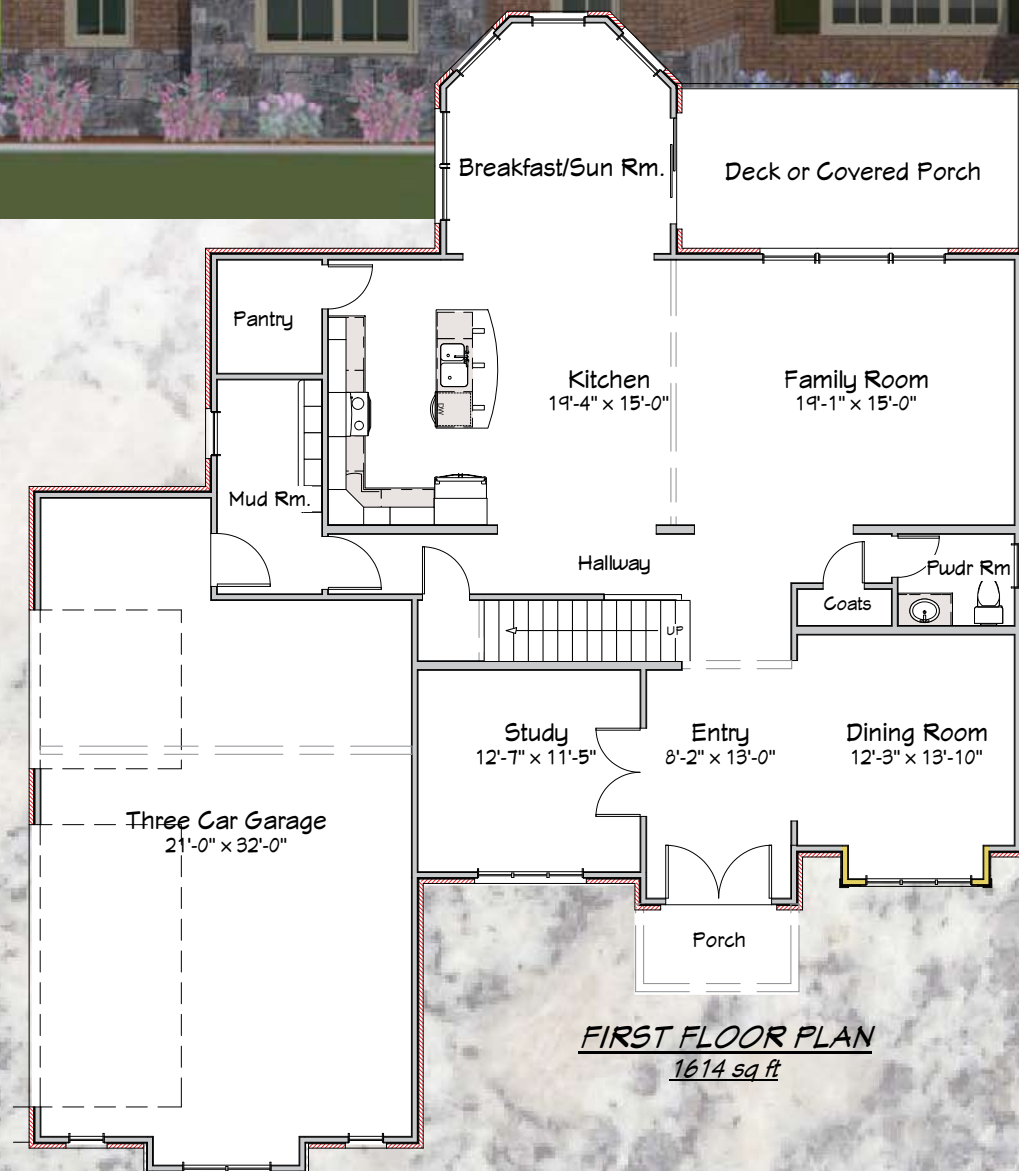
The Carolina is one of our economical floor plans which includes a large amount of square footage for the price. This plan can be four bedrooms with a bonus room or a five bedroom plan. Includes many features which are sought after by today's families and the front elevation can be altered to provide a variety of looks and styles.



Cresthaven

The Cresthaven

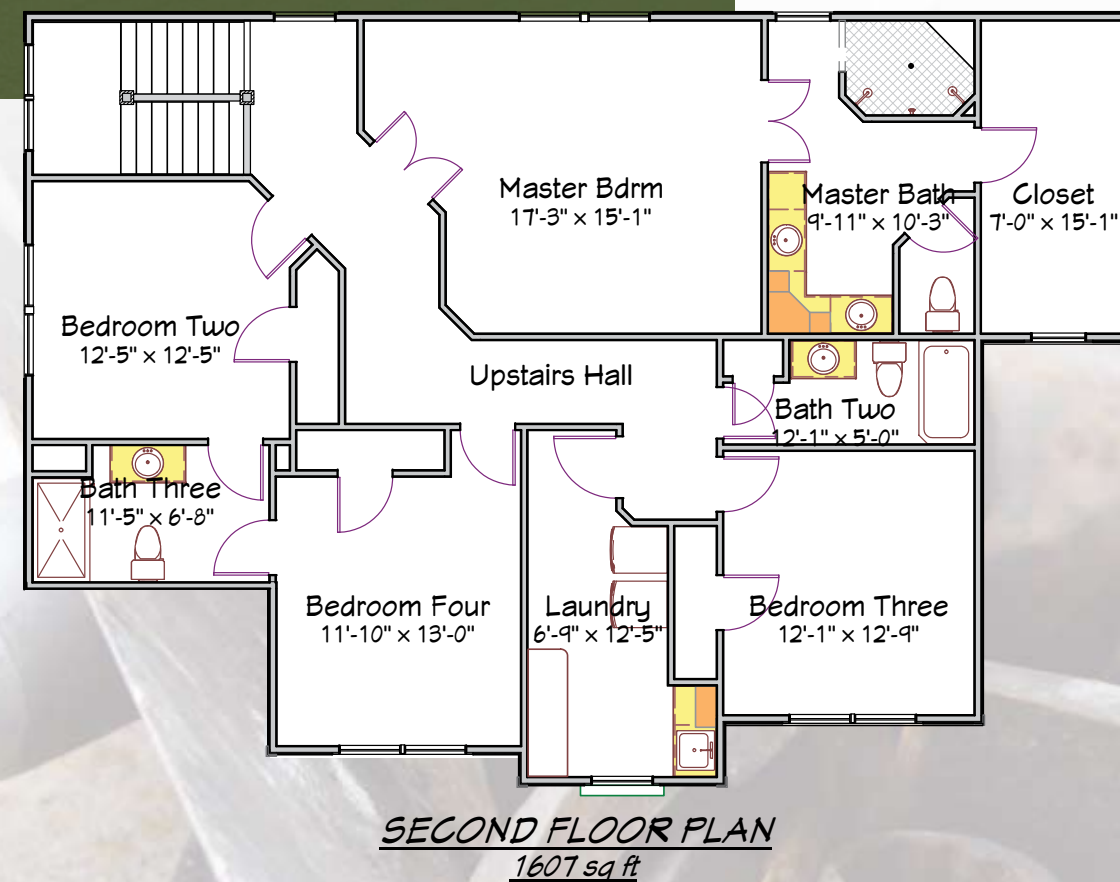
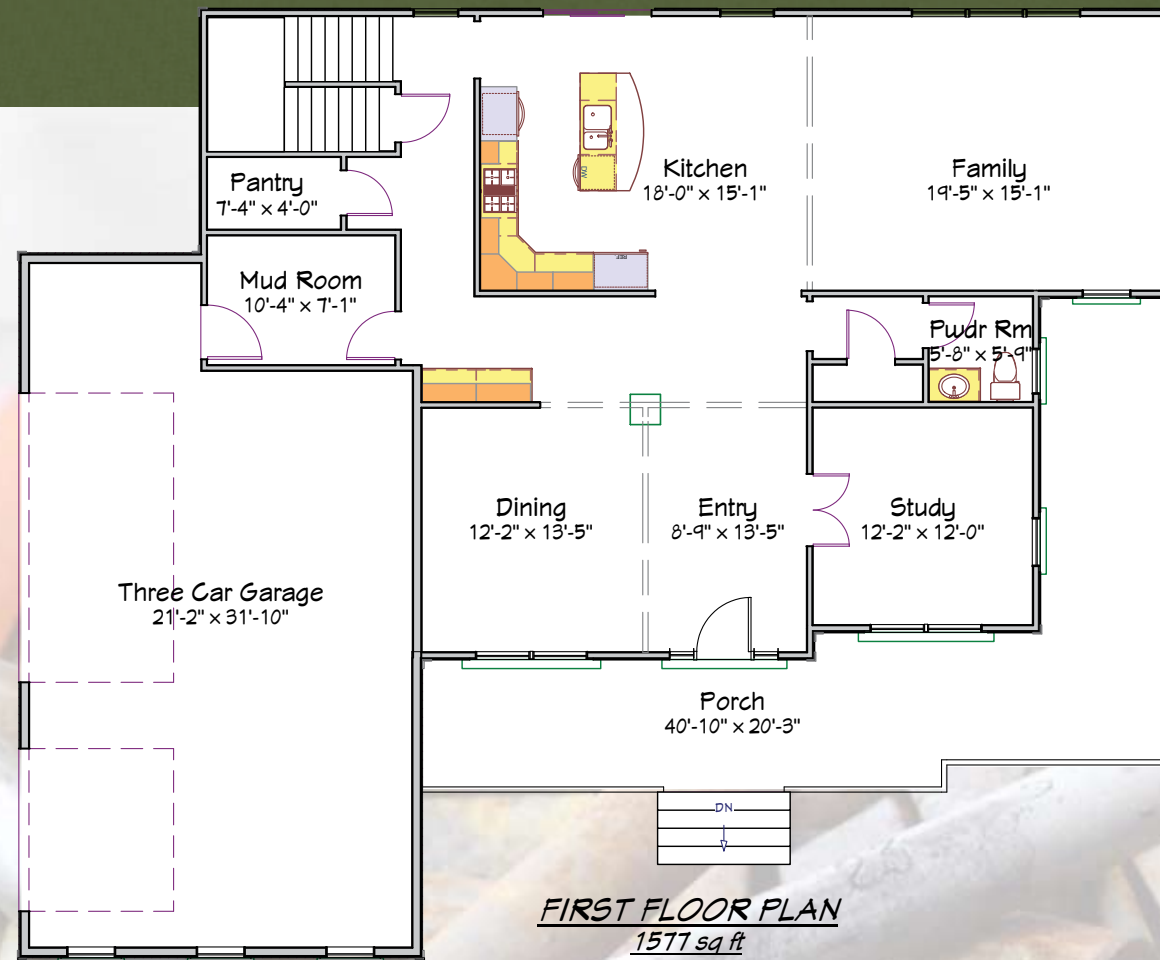
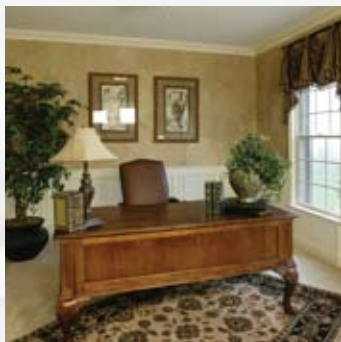
The Cresthaven is one of our newer floor plans with a flair for the imaginative. This four bedroom plan includes approximately 3400 square feet of living space, a sun room, box window bay, open and spacious family room/ kitchen area, and very large bedrooms on the second floor. The plan also includes the very popular second floor laundry and three and one half baths.



Farmingdale

The Farmingdale

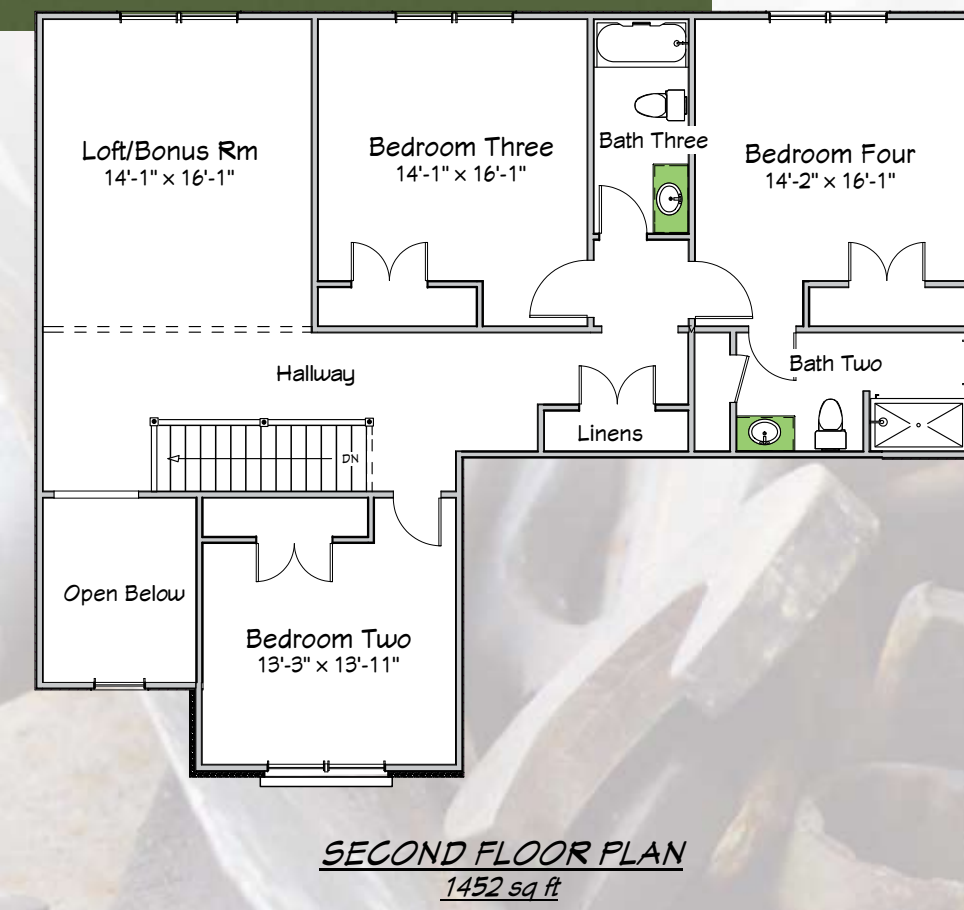
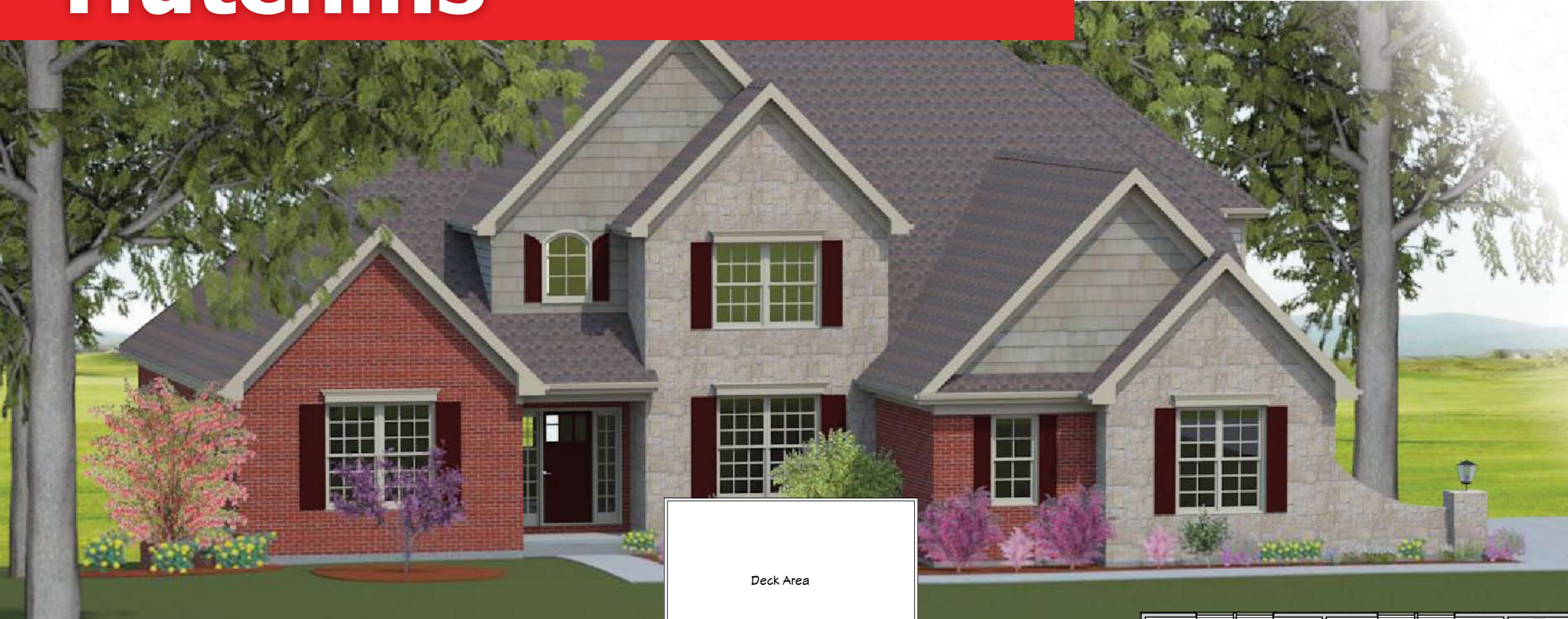
The Farmingdale is traditional floor plan with a very warm and inviting feel. The four bedroom plan with it's traditional wrap around front porch complete with beaded fir ceilings and fir porch flooring provide a cozy and relaxing place to unwind. The interior includes over 3400 square feet of living space, three and one half baths, second floor laundry, butler's pantry, mud room and rear staircase.



Hutchins

The Hutchins

The Hutchins is a first floor master plan with four or five bedrooms. The plan is design toward today's active families including a mud room, three car garage, first floor laundry, and dining room or study.



La-Alma Elyse

The La-Alma Elyse

The La-Alma-Elyse is a spacious first floor master plan with four bedrooms and three and one half baths. The kitchen area in the plan is unique, complemented by a one of a kind island arrangement. The plan includes a very appealing front elevation, a covered rear porch and nearly 3700 square feet of living space.

